

By Martin W. Littleton
Former District Attorney of Nassau County

WESTERN UNION
E. R. WHITE, J. C. WILLIAMS
NEWCOMB CARLTON
CHAIRMAN OF THE BOARD

received at 108 Broadway, Hicksville, N. Y.
#182 81 DL-NY YORK NY MAY 18 216P
EDWARD REDMOND-
EDITOR CENTRE ISLAND NEWS
HICKSVILLE NY.

DEAR EDDIE I HAVE NOT WRITTEN ANY
COLUMN FOR THIS WEEK I KNEW THIS
WAS GOING TO HAPPEN SOONER OR
LATER I COULD FEEL IT SLOWLY CREEPING
ON ME PLEASE PUBLISH THIS TELE-
GRAM SO THAT BOTH OF MY READERS
MIGHT KNOW WHAT HAS HAPPENED I
CAN JUST PICTURE HOW MAD YOU ARE
AND ASSURE YOU OF MY SYMPATHY
PERSONALLY I THINK IT IS AN OUTRAGE
EDDIE I JUST GOT TIRED I WILL
TRY TO DO BETTER NEXT WEEK YOURS
RULY
MARTIN.

339P.
PUBLISHER'S NOTE - Why Martin, how could
you lack of "space" prohibits me from giving
you my feelings, but I am sure you could have
found a more "convenient" reason for not writing your
week-end column. "The Editor of the Center Island
News" is a man of your order, that you
know. Let's have you get plenty of rest over the weekend
and you have something to fill up this place next week.

GIRL'S ESSAY WINS
UNION ORDER PRIZE

Vanessa Hnatuk, Hicksville high school senior, wrote an
essay on "Patriotism" in a contest sponsored by the Junior Order
of United American Mechanics of Hicksville. Her entry won
first place in the competition. Ernest C. Franke made the pre-
sentation of \$5.00 at the school this week.

Miss Hnatuk's prize winning essay follows:

Patriotism is more than a senti-
ment. It is a conviction based upon
comprehension of the duties of
citizenship and a determination
to perform such duties.
Patriotism is love of country, born
of familiarity with its history, re-
sponse for its institutions and
faith in its possibilities, and is
based upon a confidence in its
future and respect for its past.
The one who would appreciate
patriotism and true significance
of American civilization must
understand the sources of its de-
velopment, the conditions of its
growth, and the progress of its
evolution.
We cannot honor our country
with a deep reverence, we
cannot love it with an affection
that is pure and fervent, we
cannot be true to its principles
with an energy of zeal that
is a fulfillment of our duty,
unless we understand the
history of our country, not a
ceremonial, but a real, living
history of its people, its
people and its institutions.
We must know that principle
of his birth, but the land of
his birth is not his country.
The heart of a nation will
be cold, cramped, and stolid;
the arts will have no enduring
inspiration; the soul, society will
degenerate and the mean and
vicious will triumph. Patriotism
is not a cold, glittering passion,
but a living reality.
Have we not learned that not
stones, nor lands, nor the
principle of his birth is our
country? It is the spiritual thought
that is in our minds, it is the
flag and what it stands for. It
is its glorious history.
It is the high thoughts that
are in the heart, born of the
inspiration which comes by the
stories of their fathers, the
martyrs to liberty.
Here, in these things, is that
which we love and call our
country rather than in anything
that can be touched or handled.
We are assured that we, as
patriot scholars, cannot think to
highly of that country, or sacrifice
too much for her. No phrase ever
so badly misled more for anyone
than the oft repeated one, "The Govern-
ment of the People, by the People,
and for the People, might not
perish from the earth."

Centre Island News

The Largest Paid Circulation of Any Newspaper in the Town of Oyster Bay.
VOL. XXI No. 32
HICKSVILLE, LONG ISLAND, FRIDAY, MAY 20, 1938
\$2.00 PER YEAR—5¢—COPY

TAX SALE
As the official newspaper of the Town of Oyster Bay, this issue of Centre Island News contains the special section for sale of lands for unpaid taxes.

Approve Stokers

Will Result In Fuel Savings For Local District, Save Time Also

Automatic stokers will be installed on the two boilers of the Hicksville high school heating system, it was revealed today by Frank Chlunsky, president of the board of education of Hicksville school district.
"Over the past two seasons we have observed the operation of the two stokers we have installed in the school," Mr. Chlunsky remarked. "We have come to the conclusion that the use of automatic stokers will result in a saving of 25 per cent in fuel, but it will give us more man hours to be used on the many new custodial duties that present themselves each day.
"Under the present system the constant strain upon our custodian due to long hours of duty which a system such as ours necessitates, is a system which is a night shift," the board president continued. "This we feel has been conducive to a more efficient cleaning of our building, and a lessening of night work for the rest of the custodial staff."

The purchase and installation of the stokers, recommended by Mr. Chlunsky in his annual report at the annual school district meeting, as approved in the items of the school budget for 1938-39.

To Be Feted



WILLIAM E. ROUTSCHKY, Mr. Routschky, Grand Knight of the Joseph Barry council, Knights of Columbus of Hicksville, will be guest of honor at a testimonial dinner sponsored on October 18 by the council members at the Wheatly Hills Tavern, Westbury. William Duffy is chairman of the arrangements committee. Mr. Routschky is also cashier of the Long Island National Bank of Hicksville and president of the Nassau County Business Men's association.

New Teacher For Bethpage

H. W. Rose Will Conduct Seventh Grade and Physical Education Next Term
Herbert W. Rose of Baldwin will start the fall 1938 term at Bethpage public school as seventh grade teacher and physical education instructor. It was disclosed today by the Bethpage board of education.

Mr. Rose, a resident of Nassau county for the past six years, is a graduate of Springfield college of physical training. He has also been in charge of the Nassau County Sanatorium school at Farmingdale and has held positions at Hempstead, Freeport and West Hempstead schools.
Large class attendance expected at the seventh grade next year has made engagement of an extra seventh class teacher necessary.

Young People's Show Tonight

Three Art Comedies Demain Goes on at Masonic Temple; Dancing Will Follow

Young People's society of St. Stephen's Lutheran church of Hicksville will present a three act comedy-drama, "One In A Million" tonight (Friday) at the Masonic Temple, 815 o'clock.
The members of the cast include: Fred Fluckinger as Archie Carter, Jack Walther as Hubert, Howard Durling as Sammie Perry, Albert Adams as Temple Carter, Marion Fluckinger as Wilma Matland, Hilda Johannes as Goldie Jenkins, Emily Mulhauser as Mrs. Jenkins, and Ella Gode as Aunt Lemira.
Dancing will be staged immediately after the show and will continue until 1 a. m.

Rochman Gives Dates on County Re-Assessment

Morris Rochman, prominent attorney, outlined important provisions of the reassessment program now being carried out in the county at the weekly luncheon meeting of the Hicksville Kiwanis club Wednesday.
He pointed out that the assessment figures would not necessarily mean an increase in taxation. He also explained what field men of the assessment office would attempt to discover when inspecting homes—interior as well as exterior—in this section.
He was introduced by Dr. Walther, who presided at the meeting. The group voted to make a donation to the Boy Scout fund and the Kiwanis program is being closely allied with youth movements.

Legion to Visit Bermuda Plane Base

Legionnaires who come to Port Washington during the Nassau county Legion Convention in June will be invited to visit the Bermuda plane base.
"Transatlantic" mail week is carried from this port across 800 miles of the Atlantic Ocean to Bermuda, four times weekly.
Last Summer, the airport was the scene of a series of Transatlantic early establishment of regular transoceanic schedules to Europe. These America's Pan American Airways, and the German Deutsche Luft Hansa, presented the great flying boats of Pan American and Imperial are making four flights a week to Bermuda, and have become a familiar sight to the people of Port Washington. Most recent aeronautical event for Port Washington was the establishment, April 6, of the Bermuda mail service. The first ocean mail from the New York area which made Port Washington the foreign mail base for New York.
Port Washington Nassau County

Musical Treat Set for Tonight

Junior High School Students Arrange Festival To Aid Uniform Fund

A real treat is in store for music lovers this evening at 8:15 o'clock in the high school auditorium.
The Junior high school students are presenting a Music Festival. The program will include numbers by the Junior high school orchestra, the Boys' Chorus, and a performance of "Hansel and Gretel" will be given by the Girls' Chorus.
Scenery and costumes for the play are being prepared in cooperation with the Art and Industrial Arts department of the Junior high school.
It is hoped that a large group of people will take advantage of this splendid musical opportunity.
The admission money will be used to aid in buying for the band uniforms.

Annual Exhibitions At Schools Draw Over 1,900 Visitors

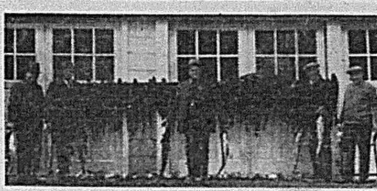
The Annual School Exhibits held in the Hicksville Public Schools this year were bigger and better than ever. It is estimated that a total of 1,900 people visited the three separate exhibits held at East street Junior-Senior high school and Nicholai street school.
Visiting the schools, the parent was able to obtain first hand information of the work being done by the school. A cross-section of all kinds of work could be found in the various rooms.
There were so many specimens on exhibit that several cases of the exhibits of the buildings were used.

'Black-Out' Big Disappointment For 100,000 Visitors and Natives

Podeyn To Speak

Re-Assessment Topic for June 3 Meeting Of R. J. Bacon Club

Puzzling questions which are bothering homeowners in the area will be answered by Col. E. M. Podeyn, chairman of the board of assessors of the Nassau County Department of Assessment, at the next meeting of the Robert J. Bacon Republican club of Hicksville, on June 3, in the Masonic Temple.
Col. Podeyn will give an outline of the reassessment program now underway in the county. He will also develop a period of the meeting to answering questions submitted from the floor.
The announcement of the meeting was made today by President Ernest C. Franke, Raymond W. Houston, deputy county executive of Nassau County, who also speak at the meeting.
The meeting will be open to the general public and a large attendance is expected to attend the session. Important but little known details of the present county governmental operation will be revealed at the meeting; it is believed.



MONDAY BEAUTIFUL: This gratifying catch of 72 pollack was obtained at Montauk Point on May 12. Picture was taken at rear of Hicksville Inn. L. to r., the anglers, not the fish: rear, Carl Nelson, Alex Wawryck, proprietor of Hicksville Inn; F. W. Strothkamp, Fred Lohman, and Anton Morschner, proprietor of Just-Rite Bakery.

Flowering Shrubs Make Make Bridle Paths Popular

Flowering shrubs and dogwood trees in Bethpage State Park have to a large extent accounted for the recent popularity of the 11 miles of bridle path throughout the park and along Bethpage State Parkway. Beautiful blossoms and ideal spring weather combined with the planned fencing of the Bethpage bridle paths make them especially attractive for saddle horse riding at this time of the year.

These bridle paths have been laid out to permit the most diversified ride possible by winding in and out of wooded and open areas, traversing level terrain and then reaching Bethpage's highest hills with fine views of the surrounding park. The paths were constructed under 116 ft. than the usual width of paths in this country so that groups may ride three or four abreast instead of following each other in single file. For the convenience of riders, refreshments stands and comfort stations are located along the paths. Near the stables a riding ring has been constructed where children and beginners may arrange for special instruction in horseback riding and equestrian technique.
Convenient to the bridle paths is a practice stick-and-ball field complete with side boards and goal posts where the more experienced riders who own polo mallets may try their hand at driving polo balls.

Hicksville Band To Play at Jones Beach State Park

The Long Island State Park Commission announces that a series of and concerts by the high schools of Nassau and Suffolk counties will be held at Jones Beach State Park on Saturdays and Sundays throughout the spring season.
The series of concerts is being arranged to acquaint the general public with the high type of music produced by these local schools. Among the schools which will appear this season are Freeport high school, Lawrence high school, Central high school of Vahoy, Seaford high school of Bethpage, Malverne high school of South Side high school of Bethpage, Central high school of Floral Park.

County Red Cross To Mark Birthday

The 21st Birthday of the Nassau County chapter of the American Red Cross will be celebrated with a luncheon at the Hempstead Hotel club on Monday, June 4, at 12:30 o'clock. Plans are being made to make this a memorable occasion.
The chapter wishes that anyone who wishes to donate a gift and care to attend this luncheon send their names to the Red Cross Chapter House, Mineola, or to the local chairman as soon as possible.

P. T. A. HAS ELECTION

Election of officers of the Hicksville Parent-Teacher Association (PTA) will be held on Monday, June 13, at 8 o'clock at the home of the group at the high school last night. A program of social activities followed the session.

ACTUAL MOVIE SCRIPT PRIZE IN NOVEL CONTEST

In conjunction with the showing of "The Buccaneer," the Center-Island News is conducting a contest with a unique prize for the winner. Al Kravyn, Playhouse manager, has obtained from Paramount Studios in Hollywood a valuable one of the manuscripts actually used in the filming of the picture.
The script on display in the theatre lobby is made up of over 200 pages and contains every bit of action and speech involving the various members of the cast from the first "take" of the opening scene on through the hundreds of following scenes to the end.
The outstanding feature of the prize is the personal autographs of Fredric March, Francis Fox, Alan Tarrant, Beulah Bondi, Anthony Quinn and Jack Hubbard.
Here are the rules for entering the contest: Write a review of the picture in 200 words or less.
You are the critic. Give your personal opinion of the picture as to direction, acting and historical value. Was it entertaining? Would you recommend seeing it a second time?

Section In 'Ruins'

Army Airmen Pleased With Outcome But Civilians Are Not

By JOHN MCGILL.
The first "black-out" of a community in the United States as defense against "enemy" bombers raiding the Farmingdale—Bethpage and Pinelawn section, while it drew record-smashing crowds to the scene, failed to impress visitors and residents alike.
To the army men of the GHQ staff the results of the "black out" and "bombardment" were highly important. As yet complete details of the umpire's decision in the fray has not been revealed, but it is believed the area within the five mile circle was left in smoldering ruins.
Every light within the district was extinguished at the given signal—three blasts of the fire sirens—and remained out for a full hour Monday night. While searchlight beams pierced the night, roving over the skies to pick out the "raiders," anti-aircraft guns went into action.
But to the majority of the spectators, except those stationed near Serenity field, no roar of guns was heard. The bombing planes flying at over 10,000 feet in the sky were not even seen without the aid of glasses.
No Accidents Reported
More than 100,000 persons were present at the scene to observe the much publicized affair. Radio hookups took the nation what was taking place. Hundreds of police officers and deputized volunteer firemen and veterans patrolled the section and kept the accident hazard extremely low.
Late comers jammed all highways to the village as far north as Oyster Bay, Woodbury, Syosset and Flushing. Traffic was at a standstill during the raid as far west as Westbury and Hempstead and to the south and east for equal distances.
Many cracks about Gramatan Aircraft corporation field at Bethpage because it was understood the Bethpage airplane factory would also have been raided; however, was concentrated on the Serenity factory field to the east Farmingdale, over three miles away.
Bethpage on the Map
A group of Bethpage youngsters who constructed a model "bomb-proof" shelter in a baseball lot received a good deal of publicity. The picture, taken by the Associated Press, appeared in the New York "Times" and other newspapers of the country.

Bulletin

ELY SIX PIECES OF MAIL.
With Ralph B. Bourdon of McKinley avenue, Hicksville, took off yesterday morning for Floyd Bennett Field, Brooklyn, to inaugurate the first airmail flight from Hicksville. He carried in his plane 364 pounds or 914 pieces of mail on the special flight to mark National Airmail Week. Present at the Hicksville Aviation Country club, 1000 Broadway, was Postmaster William Muller and Assistant Postmaster William Behrman of Hicksville, and Postmaster Harry Stutz of Bethpage. A Floyd Bennett mail was taken to Brooklyn post office and forwarded to its destination.

More than 100,000 persons were present at the scene to observe the much publicized affair. Radio hookups took the nation what was taking place. Hundreds of police officers and deputized volunteer firemen and veterans patrolled the section and kept the accident hazard extremely low.
Late comers jammed all highways to the village as far north as Oyster Bay, Woodbury, Syosset and Flushing. Traffic was at a standstill during the raid as far west as Westbury and Hempstead and to the south and east for equal distances.
Many cracks about Gramatan Aircraft corporation field at Bethpage because it was understood the Bethpage airplane factory would also have been raided; however, was concentrated on the Serenity factory field to the east Farmingdale, over three miles away.
Bethpage on the Map
A group of Bethpage youngsters who constructed a model "bomb-proof" shelter in a baseball lot received a good deal of publicity. The picture, taken by the Associated Press, appeared in the New York "Times" and other newspapers of the country.

County Red Cross To Mark Birthday

The 21st Birthday of the Nassau County chapter of the American Red Cross will be celebrated with a luncheon at the Hempstead Hotel club on Monday, June 4, at 12:30 o'clock. Plans are being made to make this a memorable occasion.
The chapter wishes that anyone who wishes to donate a gift and care to attend this luncheon send their names to the Red Cross Chapter House, Mineola, or to the local chairman as soon as possible.

P. T. A. HAS ELECTION

Election of officers of the Hicksville Parent-Teacher Association (PTA) will be held on Monday, June 13, at 8 o'clock at the home of the group at the high school last night. A program of social activities followed the session.

ACTUAL MOVIE SCRIPT PRIZE IN NOVEL CONTEST

In conjunction with the showing of "The Buccaneer," the Center-Island News is conducting a contest with a unique prize for the winner. Al Kravyn, Playhouse manager, has obtained from Paramount Studios in Hollywood a valuable one of the manuscripts actually used in the filming of the picture.
The script on display in the theatre lobby is made up of over 200 pages and contains every bit of action and speech involving the various members of the cast from the first "take" of the opening scene on through the hundreds of following scenes to the end.
The outstanding feature of the prize is the personal autographs of Fredric March, Francis Fox, Alan Tarrant, Beulah Bondi, Anthony Quinn and Jack Hubbard.
Here are the rules for entering the contest: Write a review of the picture in 200 words or less.
You are the critic. Give your personal opinion of the picture as to direction, acting and historical value. Was it entertaining? Would you recommend seeing it a second time?

Hicksville Man Protests Bills At Convention

By Forrest E. Corson
ALBANY—(A) Constitutional Convention—A Hicksville man, Henry G. Eisenman of the firm of Seaman, Talliferro and Elose, James I. Dowsey of Nassau county, opposing a New York Moffatt's motor vehicles compensation proposal, Dunigan's bill to create a state fund for Workmen's compensation and automobile insurance. Many letters for and "agin" the proposed lotteries have been received by Delegates Downey, Macy and Morse.



Bermuda Plane Lands at Manhasset Bay Airdrome

The great flying boats of Pan American and Imperial are making four flights a week to Bermuda, and have become a familiar sight to the people of Port Washington. Most recent aeronautical event for Port Washington was the establishment, April 6, of the Bermuda mail service. The first ocean mail from the New York area which made Port Washington the foreign mail base for New York.
Port Washington Nassau County

### Hicksville

The Martha Rebekah Lodge No. 484 will observe Memorial Day at their regular meeting next Thursday, May 27.

The Junior Aid Society of the Trinity Lutheran church will meet at the church at 7:30 p. m.

The following officers were elected at Monday night meeting of the Trinity Men's Club, Ernest Kromer, president; Charles Hoffmann, vice-president; William Eisenhart, secretary and Anthony Musale, treasurer.

Mr. and Mrs. Herman Zick are the proud parents of a baby daughter born on Friday, May 13, at the Glen Cove hospital.

Mrs. Rose Lubring, Mrs. Henry Starke and Mrs. Henry Brengel of the Charles Wagner unit attended a meeting of the Nassau County committee, American Legion Auxiliary, held in the Mineola Court House on Thursday evening. Memorial services for deceased members was conducted by Mrs. Marguerite Clanton, County Chairman, and Mrs. Evelyn Pearsall, Chaplain. Announcement was made of the following coming events, the Nassau county American Legion Auxiliary (Glee club) will broadcast over station WGRZ on Wednesday night, May 25, at 10 p. m., also the Glee club will have a variety entertainment at the South Franklin street school, on Wednesday evening, May 25, at 8 p. m., also the Glee club will have a variety entertainment at the South Franklin street school, on Friday evening, June 3; Judge Maurice Moore will speak on "Juvenile Delinquency" on Wednesday evening, May 25 at the Rockville Centre club house. All Unit Child Welfare Chairmen are invited to attend.

All the Gold Star Mothers of Hicksville were visited by Mrs. Thomas Doran and Mrs. Frances Bendick (herself a Gold Star Mother) of the Charles Wagner Unit on the Saturday before Mother's Day and presented with a bouquet. This is an annual custom with the organization.

Regular monthly meeting of the Junior members of the Charles Wagner unit will be held in the Legion house on Saturday afternoon, at 1:30 p. m., when Mrs. William Nodell of Floral

Park will give instructions in "clay modeling."

In conjunction with their Child Welfare program, the Charles Wagner Unit, will have Dr. Walter F. Stiller speak on "Social Diseases" at a meeting at the Legion Club House on Friday evening, May 20. Members and friends of the organization are invited to attend.

Have you bought your poppy in memory of the War dead? Each year at Memorial Day these little flowers are sold to recall to our minds not only those who have gone on, but also those who were left with us to possibly suffer for the balance of their lives for the sacrifices made through the World War. Poppies being sold by the Charles Wagner Unit No. 421 were made at the Veterans' Hospital at Northport, and the entire proceeds is used for welfare work.

The monthly business meeting of the Ladies Aid Society of the Methodist Episcopal church will be held on Monday evening at the church. At the same time, the Societies annual birthday party will be held. The Society is planning a rummage for some time in the near future.

The Children's Day program of the Methodist Episcopal church will be held on Monday evening at the church. The committee chosen are as follows: for the primary department; Mrs. Lydia Moss and Mrs. E. H. Larzon; for the main school; Mrs. Frances Mueller, Miss Mildred Smith and Miss Edna Moddie; and for the music, Mrs. Florence Webster.

The Epworth League of the Methodist Church at their annual Lyceum, decided the following officers for the coming year: Miss Mildred Smith, president; Miss Helen Harwood, first vice-president; Miss Cecyl Thomas, second vice-president; Miss Ruth Heberer, third vice-president; Miss Margery Heberer, fourth vice-president; Miss Lucy Thomas, secretary; and Miss Mary Ward, treasurer. The installation service will take place some Sunday evening in the near future.

The Community church Men's club will give an entertainment this evening at the church. After

that there will be movies shown by William McIntosh.

The Ladies Aid Society of St. Stephen's church will conduct a rummage sale in one of the vacant stores on Broadway on May 28, 27 and 28. Mrs. Fred Puckinger and Mrs. N. Harter are the committee in charge of the sale.

On Monday evening, the Senior Young People's Society of St. Stephen's church will meet at the church. The Junior Young People's Society will meet on Thursday evening at the church at which time motion pictures of Africa will be shown.

Mr. and Mrs. Jacob Schaaf left recently for California, where Mr. Schaaf will attend an insurance conference.

Eugene W. Staehle Sr., will act as manager of the Hicksville Unit of the 1938 campaign of the Nassau County Boy Scouts of America. Erwin N. Evrads is the general manager. Mr. Staehle will be assisted by Oscar Berry, Truman and Christian Giese.

A dinner party at the home of Mrs. Evelyn Martino on Sunday celebrated the birthday of Fred Noth.

The Neighborhood club went on their annual New York Pleasure Trip yesterday. They attended the matinee performance of "Mice and Men."

The Rev. Louis S. Laska, clerical delegate and George A. W. Brown, lay delegate, represented the Holy Trinity Episcopal Church of Hicksville at the 71st annual convention of the diocese of Long Island at the Cathedral of the Incarnation at Garden City on Tuesday.

The recent blanket winners of the Altar Society of St. Ignace's church are: Mrs. J. J. McGinnigley, Park avenue; Mrs. J. Dwyer, Newbridge road; Miss Anna Cholan, Duffly avenue; and Mrs. Anthony Schumacker, Harding avenue.

Little things that make a tartlet seem more comfortable (i.e.: a med. waste basket, ash trays, a drinking glass, a bedside light to step on; a towel rack; and a pitcher of cool drinking water.

### Jericho

The Ladies Auxiliary of the Jericho fire department will hold a rummage sale at the firehouse on June 2 and 3 from 10 a. m. to 5 p. m.

The Misses Lillian Halleran and Dorothy Wick of New Paltz College for Teachers were the weekend guests of Mr. and Mrs. John Halleran.

John Halleran of Jericho, William and Charles Halleran of Floral Park and Joseph Weidner of Frosset were called to the United States Naval Training Base at Newport, Rhode Island, on Wednesday morning.

John Ludwig is spending two months at Union Springs.

### TO ATTEND OWN SHOW

Councilmen of the Town of Oyster Bay will attend Memorial observances in their own communities. It was announced Tuesday by Supervisor Harry Tappen at a brief session of the town fathers. A letter was received from the Oyster Bay village's Memorial Day committee requesting the attendance of the town board as a unit.

### May in the Garden

Planting the vegetable garden is a job that lasts from early spring, until around the first of September. Lettuce, peas, spinach and many of the other cool-weather crops have already been planted, while others, subject to frost injury must wait for warmer weather. It is probable that these cool-weather crops have already been planted in most home gardens.

Probably two of the most neglected crops are the perennials, asparagus and rhubarb. While they are slow to produce, they make up for it by the huge annual production with but little effort or expense for a number of years.

As these crops interfere with plowing or spading, they should be placed along the side of the garden. A half-dozen roots of rhubarb will be ample for most families; the crop is very easily canned and also makes fine preserves.

### Report on Infectious Disease During Month in County

There were 1,059 cases of infectious of contagious diseases reported in Nassau county in April. In order of importance the six important diseases included: measles, 411; chickenpox, 136; mumps, 123; scarlet fever, 116; syphilis, 113; and whooping cough, 83.

Measles cases were reported from two cities, the three towns and 29 of the 63 incorporated villages. This disease was reported in greatest numbers from the Town of Hempstead with 199 cases, and 51 cases from 16 incorporated villages in the Town of Hempstead. While measles is essentially a disease of childhood, 18 cases occurred in those 15 to 19 years and 12 cases in those over 20 years.

Pneumonia cases occurred most frequently in two groups: Young children and mature adults. Fifty-three (40 per cent) cases were in children under 10 years, with 66 (34.5 per cent) cases in adults over 50 years.

Scarlet fever was reported from one city, 14 incorporated villages and three towns. Twelve cases occurred in children under 10 years; 56 in children 5-9 years; 27 in those 10-14 years; 9 in those 15-19 years, and 9 in adults over 20.

Eighty-three cases of whooping cough were reported: 72 in children under 10 years; 10 in children group 10-14 years, and one case in an adult.

One diphtheria case was recorded in a child three years old. Other diseases reported included: Tuberculosis, 29; gonorrhoea, 15; septic sore throat, 9; orbital-aria neonatorum, 2; Vincent's gingivitis, 2; encephalitis (serping sickness), 1; malaria, 1; meningitis, 1; tetanus (lockjaw), 1; and undulant fever, 1.

Physicians also reported a total of 293 dog bites.

### Awards Made At Company Dinner

Service yards for ten years or more service with the Long Island Lighting System were made at the annual dinner dance of the company Saturday night in the Grand Ballroom of the Hotel St. George. More than 1000 persons attended. George F. Olen was honorary chairman for the affair, and arrangements were in charge of Howard R. Gravitt, chairman. William T. Brower, Clifford A. Everts, Joseph B. Derouin, Frank G. Joergberg, W. Fred J. Faah, J. Charles Died, Walter A. Schett, Fred L. Snedecor and Herbert S. Wendt.

## Springtime Is Cleaning Time!

GIVE YOUR HOUSE A NEW DRESS LANDSCAPE YOUR GROUNDS

We'll Finance You Through A FEDERAL HOUSING MODERNIZATION LOAN UP TO 3 YEARS TO PAY

According to Improvements

Consult Us for Further Details

**BANK OF HICKSVILLE**

Member of the Federal Reserve System  
Member of Federal Deposit Insurance Corporation

## A t SPIRO'S

# THE GREATEST Special EVER OFFERED!

**BIG 1938 WESTINGHOUSE**  
with the **Kitchen-proved MEAT-KEEPER**

Biggest improvement in years! A big, covered ventilated oil-porcelain compartment for slanks, chops, or roasts! Conserves needed moisture!

only **\$119.75**  
Model HDS-32

LOOK AT THESE OTHER Kitchen-proved Features!

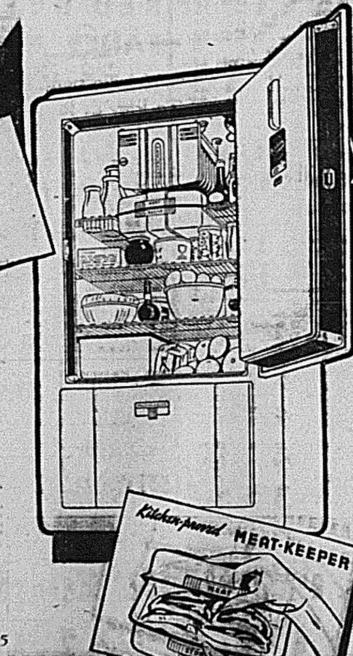
The MEAT-KEEPER heads the list! And look what you get besides: (1) Streamline beauty; (2) new Super-capacity Frosters; (3) improved Eject-o-Cube Trays; (4) scientific shelf spacing; (5) improved Economizer Scaled-In Mechanism with Built-in Watchman protection.

**BIGGER SAVINGS... Kitchen-proved!**

Certified averages from hundreds of Proving Kitchens in homes show you save the 1938 Westinghouse SAVES FOOD... \$9.10 a month on food alone! SAVES TIME... shopping trips cut in half! SAVES MONEY... 10 hours out of 12, it uses no current at all—Kitchen-Proved.

**COME IN! Compare the value!**

67 BROADWAY Phone  
HICKSVILLE, N. Y. Hicksville 5



## Westinghouse Kitchen-proved Refrigerator

99 B'way, Hicksville, L. I.

### HICKSVILLE PLAYHOUSE

Thurs.-Fri.-Sat. May 19-20-21  
**THE ADVENTURES OF TOM SAWYER**  
(In Technicolor)  
**Wayne Morris**  
"LOVE, HONOR & BELIEVE"  
The Lone Ranger—Fri. & Sat.  
Sun.-Mon.-Tues. May 22-23-24  
**"THE BUCCANEER"**  
WITH  
FRANKIE MARSH  
FRANKIE TRACY  
ARIN TAMBORO  
Wed.-Thurs. May 25-26  
**MICKEY ROONEY**  
FRODO BAGGINS  
"LOVE IS A HEADACHE"  
Everybody Sings  
John Gray Allan  
Billie Burke-Flynn  
EVA SMITH SPECIALTY

## YOUR LOCAL GUIDE

### A COMPREHENSIVE DIRECTORY AT A GLANCE

**WELCOME!**  
To our old customers who wish to buy their shirts, shoes and underwear from us we

**Announce**

**JOS. Di MATTHIA**  
10 Herzog Pl. Hicksville

**Expert Auto Body**  
Fender Repairs  
Blue Sunoco Gas and Oil

**SCHULZ Service Station**  
Old Country Rd. and East Hicksville—Phone 1221

**DICK'S MARKET**  
103 Broadway, Hicksville, Tel. 1110

**Legs of Spring Lamb**

**L. I. Ducks**

**Fresh Killed Fowl**  
"Where Quality Reigns"

Have you tried our delicious home made salads? Let us Miller's Delicatessen 128 B'way.

**Frank DeMonaco**  
California Fruits & Produce  
WHOLESALE & RETAIL  
Tel. Hicksville 1238  
111 Broadway, Hicksville  
Just Phone Us—We Deliver

Special — Giant Ice Cream Soda 10¢  
See Our New Fountain

**ROSMAN'S**  
STATIONERY STORE  
115 Broadway, Hicksville

**FOR FINE SHIRTS AND EVERGREENS**  
**EUREKA NURSERY**  
Newbridge Rd., Hicksville  
Phone 2584

Phone Hicksville 1173-3  
**B. LEVITT**  
HARRISON & STABLE SUPPLIES  
Truck Covers and Curtains  
Riding Goods  
65 South Broadway  
Hicksville, L. I.

**UNION COAL CO.**  
848 UNION AVENUE  
WESTYURK, L. I.

**Pre-Decoration Day SPECIALS!**

**Cotton Slacks 29c**  
**White Sweaters And Skirts 29c**  
**White Flannels 39c**  
**White Dresses 39c**  
**White Coats 49c**  
(Unlined)  
**White Linen Suits 59c**

**MODEL CLEANERS**  
117 B'way, Hicksville

**Palmolive** 3c  
Cake

**Dr. Lyon's** 24c  
5c Size

**Phillip's** 5c Size  
**Milk of Magnesia** 24c

**ECONOMY CUT RATE DRUGS**  
118 B'way, Hicksville, L. I.  
Opposite Church

**Fresh Killed Fowl** 25c  
**Prime Beef Pot Roast** 21c  
**Leg of Lamb** 19c  
**Jersey Roasting Pork** 17c

**W. STEBNER**  
75 B'way, Hicksville, L. I.  
For The Entire Family.  
High Quality—Low Price

**NEW SHOWING—Stocks, Hats and Accessories.**  
**Kuper's Men Shop**  
126 B'way, Hicksville

**Lumber—Architectural Woodwork Screens, Storm Sash**  
**ESTATE OF CHAS. H. VOIGT**  
Est. 1862  
E. Nicholas St. Phone 59

**"Jerry Wants To See You"**  
**Nassau Barber Shop**

**JERRY BERLING**  
128 Broadway, Hicksville  
Childs Haircut  
Monday to Friday 25c

**Spear's Dept. Store**  
75 B'way, Hicksville  
New Line of Shirts  
For The Entire Family.  
High Quality—Low Price

**WEEKDAYS**

6:15	6:30	6:45	7:00	7:15	7:30	7:45	8:00	8:15	8:30
8:45	9:00	9:15	9:30	9:45	10:00	10:15	10:30	10:45	11:00
11:15	11:30	11:45	12:00	12:15	12:30	12:45	1:00	1:15	1:30
1:45	2:00	2:15	2:30	2:45	3:00	3:15	3:30	3:45	4:00
4:15	4:30	4:45	5:00	5:15	5:30	5:45	6:00	6:15	6:30
6:45	7:00	7:15	7:30	7:45	8:00	8:15	8:30	8:45	9:00
9:15	9:30	9:45	10:00	10:15	10:30	10:45	11:00	11:15	11:30
11:45	12:00	12:15	12:30	12:45	1:00	1:15	1:30	1:45	2:00

**SUNDAYS**

9:15	9:30	9:45	10:00	10:15	10:30	10:45	11:00	11:15	11:30
11:45	12:00	12:15	12:30	12:45	1:00	1:15	1:30	1:45	2:00
2:15	2:30	2:45	3:00	3:15	3:30	3:45	4:00	4:15	4:30
4:45	5:00	5:15	5:30	5:45	6:00	6:15	6:30	6:45	7:00
7:15	7:30	7:45	8:00	8:15	8:30	8:45	9:00	9:15	9:30
9:45	10:00	10:15	10:30	10:45	11:00	11:15	11:30	11:45	12:00

**J. R. R. Gains  
First Place In  
National Safety**

Award is the Long Island Railroad of first place among Group members in the national safety contest conducted during 1937 by the Committee of Railroad Employers of the National Safety Council. It was acknowledged today by George Le Bouillier, Vice-President of Group C railroad companies whose employees were recognized between eight and 20 hours of safety during the year.

"We have had safety contests among employees on the Long Island Railroad for many years," Le Bouillier said. "The reason we have achieved in cutting down accidents are due in large measure to the fine spirit of co-operation on the part of every employee of the Railroad. It is very gratifying indeed to receive this recognition of our efforts during the past year."

During 1937 there was an average of some 6000 employees on the Long Island Railroad performing their service during the year and over 14 million man hours. Among all the employees of the railroad, working in shops and on tracks and stations, cars, trolleys and power plants.

**Hundreds Find  
Values at Drug Shop**

Hundreds of local residents are taking advantage of the remarkable values offered at the newly opened Economy Cut Rate Drug Store, 118 Broadway, Hicksville. Though the store has been open less than two weeks, it boasts a remarkable number of friends and patrons in this area.

According to the proprietress, the store will continue to maintain amazing low price levels on standard quality merchandise, its policy being "small profits and large turnover."

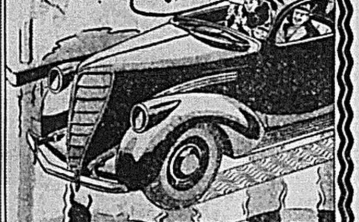
The store is located between Kiper's Men Shop and the Plaza Department store.

**THE FJORDS OF SWEDEN**

Of course, there are the fjords in Norway, but the tourist who insalats on lovely fjords elsewhere knows that in Sweden at Bohuslan there are rugged fjords made doubly interesting by association with the Beowulf Saga.

**GET THE MOTORING  
thrill of a  
life time**

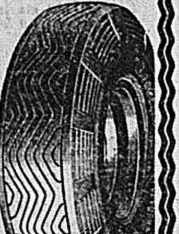
YOU'VE NEVER KNOW ANY TIRE  
COULD STOP SO QUICKLY  
ON A SLIPPERY ROAD!



**THE NEXT TIME IT RAINS  
COME IN FOR A SAFETY  
DEMONSTRATION**

Just one rainy-day ride on these Goodrich Silvertown with the Life-Saver Tread will prove to you that these remarkable new tires will stop you quicker, safer on wet roads than you ever stopped before. That's because the new Life-Saver Tread is actually a road dryer. It gives you a dry track for the rubber to grip.

Besides, the new Goodrich Silvertown is the only tire that gives you the famous Golden Ply blow-out protection. Come in for a free demonstration ride the next time it rains. Then you'll know why this new Silvertown is called the safest thing on wheels.



**YES SIR, THIS  
NEW KIND OF  
TIRE HUGS DRY  
ROADS - DRIES  
WET ROADS**

**NO EXTRA COST**  
Many tires cost more but no other tire gives you the two-way protection a giant sibil and blow-out.

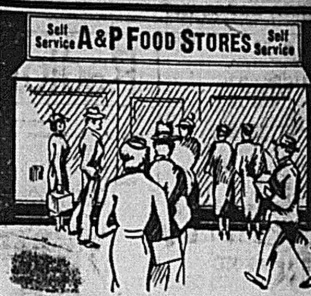
**NEW SILVERTOWN STILL THE  
ONLY TIRE WITH GOLDEN PLY  
BLOW-OUT PROTECTION**

This famous Goodrich invention is another life-saving protection you get in the new Goodrich Safety Silvertown at no extra cost!



**The new Goodrich  
SAFETY Silvertown**  
LIFE-SAVER TREAD.....GOLDEN PLY BLOW-OUT PROTECTION

**NIDDRIE FOSS**  
TIRE CORPORATION  
181 N. FRANKLIN ST.  
HEMPSTEAD  
PHONE HEMPSTEAD 5223



**it's always  
GOOD BUYING at A&P's  
SELF SERVICE  
Super FOOD MARKETS**



**ADDITIONAL LOW REGULAR PRICES**

OXYDOL	Large pkts.	19c	STRINGBEANS	Standard Quality	3 No. 2 cans	20c
CORN	Standard Quality	3 No. 2 cans	ARGO STARCH		2 pkts.	15c
PEACHES	IONA BRAND	2 lbs. cans	PAPER NAPKINS		pkgs. of 10	5c
GOLD DUST		1 lb. pkts.	Daily DOG FOOD		6 1 lb. cans	25c
TUB BUTTER SILVERBROOK		1 lb. 27c	GRAPE JUICE	A&P	qt. bot.	23c
OCTAGON SOAP		4 cakes	PEAS	Reliable Fancy Grade A	2 No. 2 cans	25c
Selected EGGS GRADE A WILDMERE		dor. 29c	H-O OATS	Quick or Regular	pkts.	10c
STORE CHEESE YOUNG AMERICAN		1 lb. 19c	Fancy RICE		3 1 lb. bulk	10c
CREAM CHEESE Kraft or Borden's		3 oz. pkg. 8c	TOMATOES	Standard Quality	3 No. 2 cans	19c
Pabst-ett CHEESE		2 pkts. 27c	TOMATO SAUCE	A&P BRAND	6 cans	23c
Tomato Juice Ann Page Grade A		15 1/2 oz. cans 23c	Italian COOK OIL		gal. can	85c
TOMATO JUICE Sun Bayed		3 1/2 oz. cans 17c	GRAPENUT FLAKES		3 pkts.	25c
SUNSWEEP PRUNES		2 1/2 lb. pkgs. 25c	SELLOX		2 lbs. pkts.	21c
TOMATO SAUCE Del Monte		6 cans 25c	FAIRY SOAP		3 cakes	10c
Heinz KETCHUP		14 oz. bot. 19c	Babbitt's CLEANSER		3 cans	10c
Del Monte PEARS		1 qt. can 17c	AMMONIA	A&P	qt. bot.	9c
PRESTO CAKE FLOUR		1 lb. pkts. 23c	GRAPE JAM	Ann Page	1 lb. jar	14c
BABY FOODS Clapps or Heinz		2 cans 15c	CONDENSED MILK White House		14 oz. can	10c
L & P SAUCE		bot. 25c	MELLO WHEAT		2 1/2 lb. pkts.	15c
KETCHUP		3 14 oz. bot. 25c	BAKER'S COCOA		2 1/2 lb. pkts.	11c
APRICOTS IONA BRAND		1 qt. can 15c	IONA COCOA		2 1/2 lb. pkts.	11c
KARO SYRUP BLUE LABEL 2		24 oz. cans 23c	Double Tip MATCHES		3 boxes	11c
Red Salmon Sullana Brand		1 tall can 23c	ORANGE JUICE Sundine		3 cans	25c
IVORY SOAP med. cake		5c 3 lbs. cakes 19c	CORNED BEEF ARMOUR'S		12 oz. can	15c
CHIPSO Flakes or Granules		1 lb. pkts. 19c	DILL PICKLES Manhattan Brand		2 qt. jars	27c
CLOROX		qt. 20c	SHAKER SALT DIAMOND CRYSTAL		2 24 oz. pkts.	11c
CORN FLAKES Sunnyfield		2 8 oz. pkts. 11c	RINSO		2 lbs. pkts.	37c
RALSTON FOOD		small pkts. 9c	QUAKER OATS		2 20 oz. pkts.	15c
LUX FLAKES		1 lb. pkts. 20c	SUNNYFIELD OATS		2 2 lb. pkts.	13c
Our Own CEYLON TEA		1/2 lb. pkts. 20c	CRABMEAT IMPORTED		1 lb. can	21c
DRANO or SANI FLUSH		can 17c	CAKE FLOUR Swansdown		1 lb. pkts.	21c
SLICED BEETS SNIDERS		jar 10c	PUFFED WHEAT		pkts. 7c	
CAMPBELLS BEANS		4 1 lb. cans 25c	PUFFED RICE		2 pkts. 17c	
ANN PAGE BEANS		4 1 lb. cans 23c	SUN SWEET PRUNES		2 2 lb. cans	25c
PURE TUB LARD		2 lbs. 19c	KAFFEE HAG		1 lb. can	32c
BRILLO		2 pkts. 25c	A & H SAL SODA		3 pkts.	10c
BISQUICK		1 lb. pkts. 25c	SELOX		2 pkts.	21c
FORCE		2 pkts. 19c				

**Fine Quality Meats and Fish**

**FANCY FRESH Broilers or Fryers 2 to 3 lb. lb. 29c**

**FIRST SIX RIBS Prime Ribs of Beef lb. 21c**

**CHOICE GRADE LEGS of LAMB lb. 22c**  
**FRESH LONG ISLAND DUCKS lb. 17c**  
**FRESH HAMS WHOLE or EITHER HALF lb. 19c**  
**LEG & RUMP of VEAL lb. 19c**  
**SHOULDER of LAMB WHOLE lb. 13c**  
**BONELESS CHUCK POT ROAST lb. 25c**  
**SMOKED CALAS SHORT CUT lb. 17c**  
**CHUCK STEAK lb. 19c** | **BEEF LIVER lb. 19c**  
**Skinless Frankfurters lb. 19c** | **Fresh SCALLOPS lb. 15c**  
**Sliced Boiled HAM 1/2 lb. 15c** | **Fillet of Haddock lb. 13c**

**LARGE SELECTED EGGS GRADE C dor. 21c**  
**SUNNYFIELD FLOUR 24 1/2 lb. bag 65c**  
**FLOUR HECKERS' FILLBURY GOLD MEDAL 24 1/2 lb. bag 89c**  
**FINE GRANULATED SUGAR 5 lb. cotton sack 24c**  
**HERSHEY'S CHOCOLATE 2 16 oz. cans 15c**  
**BON AMI POWDER 2 cans 19c**  
**RED DEVIL CLEANSER can 2c**  
**FANCY APPLE SAUCE A & P BRAND No. 2 can 5c**  
**RICE KRISPIES KELLOGGS 2 pkts. 19c**  
**MAZOLA or WESSON OIL gal. can 99c**  
**WALDORF PAPER 4 rolls 15c**  
**GRAPEFRUIT JUICE STANDARD QUALITY 4 cans 25c**  
**HECKERS FARINA 28 oz. pkts. 17c**  
**FRIENDS BEANS 2 19 oz. cans 19c** | **2 23 oz. cans 25c**  
**LUX FLAKES 1 lb. pkts. 18c**  
**RED CIRCLE COFFEE 2 1 lb. pkts. 35c**  
**Broadcast CORNED BEEF HASH 2 1 lb. cans 27c**  
**POST TOASTIES 2 pkts. 11c**  
**WHITE HOUSE Evaporated Milk tall can 6c 6 cans 35c**  
**FLIT 1/2 pt. can 10c** | **1 lb. can 17c** | **qt. can 27c**

**NEARBY A & P SUPER FOOD MARKETS**  
**HICKSVILLE**  
 71 Broadway, (bet. Herzog & Marie Sts.)





CLASSIFIED ADS

Quick Results At The Lowest Rate

LOOK - LOOK Give your chimney cleaned for 50c...

CATCH YOUR FEET at the Hicksville Hatchery...

FOR RENT Apartment for rent 4 rooms and bath...

FOR RENT Bungalow with 5 rooms and bath...

OPPORTUNITY \$150.00 will put you in business in a Cateria-Restaurant...

FOUND Police dog, brown and white markings, stray for past week...

DUCK EGGS For Sale for hatching Pekins and Muscovies...

FOR RENT FOR RENT - Furnished room in private home...

FOR RENT Bungalow with 5 rooms and bath...

FOR SALE Choice Hereford Steers and Heifers...

NOTICE F. J. Peterkin will open her florist shop again at 198 West John St...

LOST Lost ladies diamond pin. Lost about 2 weeks ago...

FOR RENT Apartment for rent 2 rooms. All improvement, electric, gas and heat furnished...

LEGAL NOTICE NOTICE TO CREDITORS Pursuant to an order of HON. LEONE D. HOWELL, Surrogate of the County of Nassau...

PUBLIC NOTICE NOTICE IS HEREBY GIVEN that the following personal property, to wit, a certain 1929 Mack Van will be sold at public auction on the 11th day of June...

Paint With Horn Aluminum Paint. Actually you are using metallic aluminum when you do this. A fine product for pipes and equipment...

STOP LOOK LISTEN IF MISFORTUNE STOPS you and you wish to LOOK for this type of service LISTEN to our request that you give us the opportunity to make your losses...

HUNTINGTON THEATRE CONTINUOUS PERFORMANCE DAILY. STARTING SAT. MAY 28 5- Big Act - 5 OF REAL BIG-TIME VAUDEVILLE...

SAVE LIVES - - - USE CARE ON THE HIGHWAYS

SAVE LIVES—PREVENT INJURIES ON THE HIGHWAY

HIGHWAY KILLING MUST STOP

The number one rule of the highway—your car MUST be under control at all times.

Impending legislation will make it mandatory for all drivers to submit their cars at regular intervals for complete inspection to determine its fitness to take its place on the highway.

A voluntary inspection on your part will help decrease accidents until such times as laws are passed requiring a routine inspection of your automobile.

Faulty headlights, brakes and tires are potential sources of grief and accidents.

We must all do our part to make Nassau county safe for drivers and pedestrians.



Seely & Co. Inc. 1st Branch Division AROMATIC CHEMICALS

BRIGANDI'S BAR & GILL 23 Woodbury Rd. Cor. Bay Ave.

Bonnie Brook Lodge. 1000 Ft. of the West Tupper

Svosset Garage Inc. Authorized Dealers in 1938 - 1939 FLYWHEEL INTERNATIONAL TRUCKS

Havahome Kennels. Dogs Always for Sale

Theodore Galiza Streets. JACKSON STREET

Budd's Garage. INCOLN ZEPHYR Cars and Trucks

Jeicho Turnpike Nursery Inc. 1000 Turnpike, Svossset, L. I.

Charles Pfister GOLD-MEDAL LUNCH ROOM

Betpage Gardens Florist-Landscaper

Home Service Station High Quality Products

SYOSSET INN BEER - WINES - LIQUORS

J. GELBER TOBACCONIST

Nassau Brick Co. Inc. BRICK MANUFACTURERS

Five Corners Restaurant Stewart Ave. & Hempstead Tpke.

Charles Marks Used Tires-Tubes-Cars-Parts

MIKE'S Farmingdale Bar & Grill

William H. Frost Dealer in Guyra Ice

Frank A. May CIGARS-Gas Station-Cigarettes

Long Island National Bank of Hicksville, L. I.

Bookman's Melville Hotel Catering to Clubs and Parties

R. O. Bumell & Co. Inc. Concrete Blocks-Sand & Gravel

School House Market HERMAN LAMM

Bethpage Auto Service SENCLAR H. G. GAROLINE

Nassau Center Auto Electricians

Larsen Roofing Co. Inc. Flat Roofing - Shingles - Siding

Maywood Inn Famous for Our Home Cooking

Mr. John Hinch ROAD FOREMAN

Sevsky Aircraft Corp. Farmingdale, L. I. New York

Wayside Rest Best Place on L. I. to Eat

Motor Inn Garage & Sales Co. P. HOWARD OHM

HOME APPLIANCE Ideal Auto Supply Co.

R. O. Bumell & Co. Inc. Concrete Blocks-Sand & Gravel

Hicksville Live Poultry Market

Farmingdale Motor Service

Park View Market KREID FORTSCH, Prop.

Maegi's Bar & Grill WINES & LIQUORS

Godfrey Farm Supply Co.

C. W. Lauman & Co. Water Supply Contractors

D. Sauser Hardware - Paints - Wallpaper

The Hicksville Inn A. WAINYCK, Prop.

Bethpage Feed Co. Dealer in HAY GRAIN & FEED

Griffin & Rushmore SEED-MEED POTATOES

Compliments Of The Bank of Farmingdale Long Island

Compliments Of The First National Bank of Farmingdale, L. I.

Empire Storage Warehouse

Tommy's Auto Service A. CORAGGIO, Prop.

Hicksville Playhouse

Garrets Auto Parts Guaranteed Replacement Parts

Hicksville Auto Wrecking Co. MICHAEL CARUPO, Prop.

Consumers Service Fuel Oil-Kerosene-Gas & Coal

Hicksville-Rohrbach Plate Glass Co.

Estate of Charles H. Voigt Our 10th Year of Service

Sutter Monumental Works

Compliments Of The Bank of Hicksville

Bahrenburg's Bakery

Eisemann Motor Car Co.

The Neighborhood Store

Just-Rite Bakery

Mowen's Funeral Home

McKeon Lumber Co. Inc.

Doc's Service Station

Jean's Beauty Salon

F. Glinka Come and See Us in Our New Location

Bevan Service LAWRENCE W. BEVAN, Prop.

Farmingdale Individual Laundry Service Inc.

Patrick's Service Station

Dan's Bargain Store

H. C. Stolz Sons Dealers in Choice Meats of all kinds

Hub Diner

Beau Sejour Restaurant

George Loucks CHIROPRACTOR

Henry's Restaurant

Sengstacken & Schaaf BUILDING MATERIALS

William Kromer Traded Seeds & Seed Potatoes

Fred Davis PLUMBING & HEATING

Nassau Seed Co. William Duffy - Sec. & Treas.

Pop's Hicksville Deli

D. Deninno & Bros. Dealers in

Jericho Jersey Dairy

Broadway Hardware

SPIRO'S 67 Broadway

Chas. O. Schmidt PAINTS - HARDWARE

C. & D. Cement Block Co.

Barth's Bakery

Compiments Of HENRY PAPES

Compiments Of HENRY PAPES



THE WORLD'S GREATEST MARKETS Featuring NATIONALY ADVERTISED PRODUCTS

# KING KULLEN

STORE HOURS:

MONDAY TO THURSDAY . . . 8 A. M. TO 6 P. M

FRIDAY AND SATURDAY . . . 8 A. M. TO 9 P. M.

**JAMAICA**  
New York Ave. & Archer Pl  
112d St. & Jamaica Ave.  
84-85 Parsons Blvd.

**BELLAIRE**  
210-10 Jamaica Ave.

**ST. ALBANS**  
119th Ave. & Merrick Rd.  
198th St. & Linden Blvd.

**WOODHAVEN**  
78th St. & Jamaica Ave.

**RIDGEWOOD**  
300 Wyckoff Ave.

**ELMHURST**  
Queens Blvd. & 55th Rd.

Jackson Hts.—Corona  
37-17 Junction Boulevard

**FLUSHING**  
193-13 Northern Blvd.  
Kissena Blvd. & Cherry Ave.

**VALLEY STREAM**  
3 West Merrick Rd.

**FREEPORT**  
Main St. & Merrick Rd.

**HEMPSTEAD**  
Prospect and Greenwich Sts.

Rockville Centre  
Sunrise Highway

**MINEOLA**  
255 Jericho Turnpike

**LONG ISLAND CITY**  
43rd St. & Northern Blvd.

**HOW DOES HE DO IT?**

**WHY PAY MORE?**

**A BIG IDEA THAT MADE US BIG!**

King Kullen is proud, of course, of operating the greatest super-markets in all the world, but we are more proud of the fact that it wasn't money that built 'em, but your enthusiastic support of a BIG IDEA! An IDEA that big volume is more important than big profits! An IDEA that folks prefer advertised brands to unknown private brands! An IDEA that you prefer to serve yourself and save! An IDEA that grew into an IDEAL to bring you the world's best foods at the world's lowest prices EVERY DAY IN THE YEAR!

Again We Are Featuring The Lowest Prices on Quality Meats. WHY PAY MORE?

LEGS OF

**SPRING LAMB**  
lb. **23c**

**FRESH CHICKENS**  
lb. **21c**  
4 to 7 Lb. Average

**KOLLNER'S SMOKED HAMS**  
lb. **23c**  
(Whole or Half)—One Price Only

**COUNTY FAIR SPICED HAM (SLICED)**  
1/2 lb. **17c**

**SLICED BACON**  
Cellophane Wrapped  
1/2 lb. **15c**

**SHOULDERS LAMB (Boned)—Choice Grade Quality**  
lb. **17c**

**KOLLNER'S FAMOUS FRANKFURTERS**  
Quality Made  
lb. **23c**

**Kollner's Famous HEAD CHEESE or BEEF BOLOGNA**  
lb. **23c**

**STRIP BACON (Boned)—Whole or Half—Sugar Cured (4 to 8 Lb. Average)**  
lb. **23c**

**VEAL CROQUETTES**  
Fresh Made  
lb. **19c**

**BREAST or NECK VEAL**  
lb. **13c**  
Milk-Fed Quality

QUALITY FISH ONLY

**FANCY FRESH Mackerel** lb. 9c

**FANCY FRESH Scallops** lb. 19c

**LARGE Chowder Clams** doz. 15c

1/2 Pound Pkg.  
**LIPTON'S TEA**  
**33c**

Largest Can  
**MT. ANGEL FRESH PRUNES**  
**10c**

Large No. 2 Can  
**DR. PHILLIP'S ORANGE JUICE**  
2 cans **15c**

**LARGE SIZE PRESTO**  
**22c**  
PKG.

**SUN-RAYED TOMATO JUICE**  
3 cans **16c**

Tall Can Finesse Whole Natural  
**Apricots** 2 cans **15c**

Tall Can Sweet Life  
**Grapefruit Juice** 5c

Large No. 2 Premier  
**Grapefruit** 2 cans **19c**

Large No. 2 White Rose 2 CANS  
**Garden Peas** **27c**

2Lb. Pkg.  
**River Rice** 2 pkgs. **19c**

Pound Pkg. Sunshine  
**Graham Crackers** **14c**

Tall Can  
**VAN CAMP'S EVAPORATED MILK**  
3 cans **17c**

Flako  
**Pie Crust** 2 pkgs. **19c**

Libby's 2 JARS  
**Stuffed Olives** **15c**

Beechnut 2 JARS  
**Peanut Butter** **25c**

Fanning's Bread and Butter  
**PICKLES** jar **12c**

All Flavors 3 PKGS.  
**Royal Desserts** **13c**

Jello 3 CANS  
**Ice Cream Mix** **20c**

Heinz  
**Baby Food** can **7c**

Pound Package Campfire  
**Marshmallows** **12c**

Crosse & Blackwell  
**Marmalade** jar **17c**

Grocery Specials Effective to Wed., May 25, '38

Wilson's Certified Corned Beef  
**Hash** 2 cans **23c**

French's  
**Mustard** jar **7c**

Large Size Friend's  
**BEANS** can **12c**

Hormel  
**Spiced Ham** can **29c**

Sante  
**Cottage Cheese** lb. **7c**

Switzerland  
**Swiss Cheese** lb. **39c**

**MAXWELL HOUSE COFFEE**  
**23c lb. can**

**SPRY** 1-lb. can 17c  
3-lb. can 47c

Tall Can Vitelli  
**Italian Tomatoes** **11c**

Pint Can  
**MAZOLA** **18c**

Ardley  
**FACIAL** (pkg. of 200) 7c  
**TISSUES** (pkg. of 500) 15c

Lifebuoy  
**SOAP** cake **5c**

Large Size Kirkman's 2 PKGS.  
**Soap Powder** **27c**

Cutrite (40-Foot Roll)  
**WAX PAPER** **5c**

Bird's-Eye  
**Matches** 3 pkgs. **10c**

Square Deal  
**Dog Food** 3 cans **11c**

Large No. 2 Can  
**Tomatoes**  
4 cans **21c**

Quart Jar.  
**KRAFT'S MIRACLE WHIP**  
**31c**

**KIRKMAN'S BORAX SOAP**  
6 cakes **21c**

**LARGE SIZE RINSO**  
**17c**  
PKG.

**WALDORF TOILET TISSUE**  
2 rolls **7c**

**FRUITS & VEGETABLES**

**SWEET FLORIDA ORANGES**  
**12 for 10c**

**FANCY DELICIOUS TABLE APPLES**  
**12 for 10c**

U. S. No. 1 New Texas  
**POTATOES**  
**12 lbs. 21c**

**TENDER STRINGLESS BEANS**  
lb. **5c**

U. S. No. 1 Large New Texas  
**YELLOW ONIONS**  
**3 lbs. 11c**

**FRESH BOSTON LETTUCE**  
head **5c**

**CRISPY TABLE CELERY**  
bunch **5c**

**FANCY NEW WHITE CABBAGE**  
lb. **3c**

**FRESH GARDEN SPINACH**  
lb. **3c**

**FRESH ASPARAGUS**  
bunch **19c**

**FANCY GREEN CUCUMBERS**  
**3 for 10c**

**FRESH HOME GROWN RED RADISHES**  
**3 bunches 7c**

**FRESH HOME GROWN SCALLIONS**  
**3 bunches 7c**

**FRESH HOME GROWN RHUBARB**  
**3 bunches 7c**

Specials for Friday and Saturday

WE RESERVE THE RIGHT TO LIMIT QUANTITIES • POSITIVELY NO MERCHANDISE SOLD TO DEALERS